

Public Protection Portfolio

(Including Scrutiny of South Nottinghamshire Community Safety Partnership)

November 2020

Portfolio

- Crime Reduction and Community Safety
- Private Sector Housing
- Environmental Health
- Food Safety and Standards
- Licensing
- Emergency Planning
- Safeguarding



Agenda

- Crime/ASB, effect of Covid 19
- Domestic Abuse
- Selective Licensing
- Other issues raised by members

What's happening to Crime and ASB: Nottinghamshire 2019/20

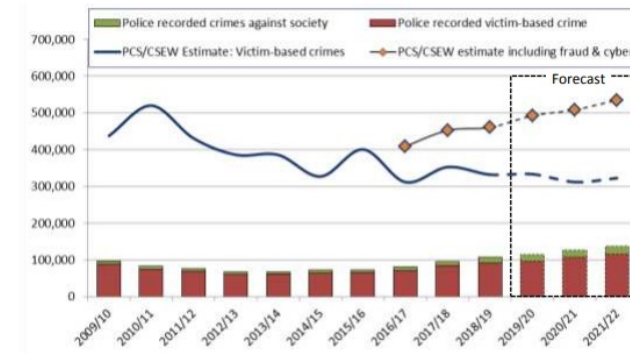
- All Crime down 0.5%
- Non Domestic Crime down 14.6%
- Theft down 11.2%
- Hate Incidents (Non-Crime) down 8.8%
- Vehicle Crime down 4.6%
- Burglary down 3%
- Robbery down 2.9%
- Sexual Offences down 2.8%
- Arson and Criminal Damage down 2%



Proactive Policing 2019/20

- Stop and search + 78.7% (+2,417)
- Drug offences +21.6%
- Possession of Weapons +12.4%
- Public order offences +4.5%

Crime trends in Nottinghamshire



Recorded Crime in Gedling 6 months to September 2020 compared to March 2020

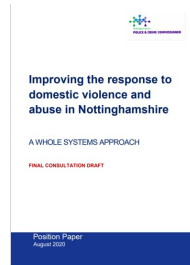
Offence type		Current	Previous	Change	% Change
All Crime		2996	3198	-202	-6.32
Victim-based crime		2442	2762	-320	-11.59
VAP		1122	1164	-42	-3.61
	Violence with injury	360	375	-15	-4.00
	Violence without injury	375	382	-7	-1.83
	Stalking and harassment	387	406	-19	-4.68
Burglary		144	241	-97	-40.26
Theft					
	Shoplifting	181	267	-86	-32.21
Vehicle Offences		141	220	-79	-35.91
	Theft from Motor Vehicle	67	125	-58	-46.4
	Theft of Motor Vehicle	54	66	-8	-12.12
Drug Offences		155	105	50	+47.62
	YTD	2019			
ASB		1941	1115	+826	+74.1
Hate Occurrences		82	73	+9	+12.3
Domestic Occs		859	775	+84	+10.8

Local Policing Priorities

- Speeding,
- Residential Burglary
- Drug Supply

Domestic Violence and Abuse

- Changing nature of domestic abuse
- Is the iceberg growing?
- Partnership priority
- Concerns over lockdown
- Consultation Paper
- Domestic Violence Bill

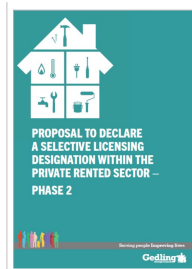


Improving the response to Domestic Violence

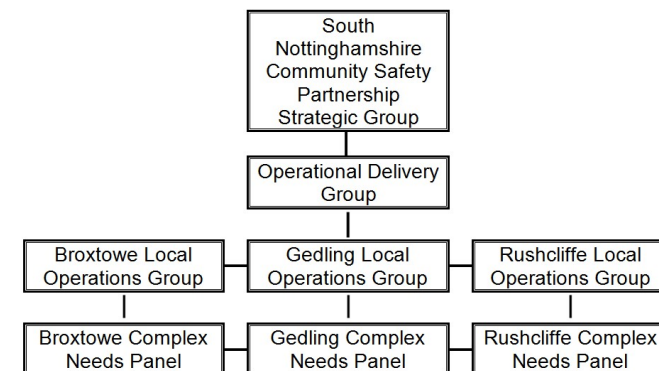
- Prevalence and severity declining
- Recognition improving, specialist investigators
- Prosecution rates still problematic
- Advice and support services maintained but question of refuge places
- Gaps in dealing with perpetrators
- Prevention services, role of VRU

Selective Licensing Phase 2 Consultation

- Extending scheme started in Netherfield in October 2018 to
- Carlton Hill
- Colwick
- Daybrook
- Newstead Village



South Nottinghamshire CSP Structure



SNCSF Priorities and Achievements

- Keeps partners involved
- Share lessons and understanding
- Mutual support and assistance

Questions, Comments



Links

- PCC annual report www.nottinghamshire.pcc.police.uk/Document-Library/Public-Information/Annual-Reports/2019-2020/Annual-Report-2019-20.pdf
- PCC Crime needs assessment www.nottinghamshire.pcc.police.uk/Document-Library/Public-Information/Newsletters-and-Publications/Publications/PCNA/Nottinghamshire-Police-and-Crime-Needs-Assessment-2019.pdf
- Domestic Violence Consultation Draft www.nottinghamshire.pcc.police.uk/Document-Library/Get-Involved/Response-to-DV-and-DA/2020-Improving-the-Response-to-Domestic-Violence-and-Abuse-In-Nottinghamshire-FINAL-CONSULTATION-DRAFT.pdf
- Selective licensing report to Cabinet www.democracy.gedling.gov.uk/documents/s25077/Appendix%20Propo%20sal%20to%20Declare%20a%20Selective%20Licensing%20Designation%20with%20the%20Private%20Rented%20Sector%20-%20Ph.pdf